

# HydroGeo Analyst 4.0



- **Expanded Data Connection to Popular Industry Programs**
- **Vast Improvements to Core Functionality**
- **More Graphical Display Options**



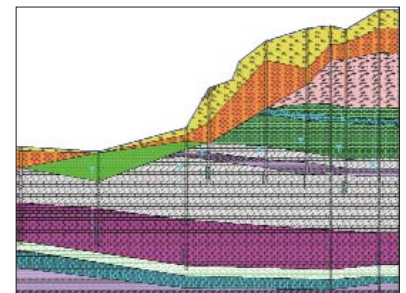
## **Organize your data, streamline project workflows, and deliver projects more efficiently with HydroGeo Analyst**

HydroGeo Analyst (HGA) is the only groundwater and environmental desktop software solution that consolidates a wide range of functionality and capabilities into a single working environment. From borehole logging and mapping, to cross-section interpretation and three-dimensional visualization, HydroGeo Analyst seamlessly provides the core tools necessary for delivering projects. Now, HydroGeo Analyst v.4.0 offers even more!

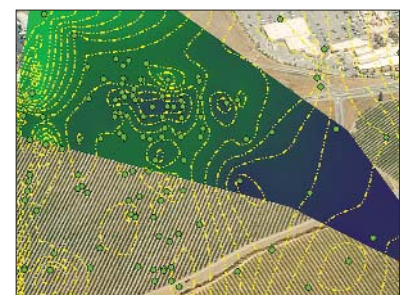
## **What's New in v.4.0?**

- Dramatically improved Map Manager functionality (scale, legends, color shading, plots, etc.)
- Expanded control in Cross-Section Editor (legend display, axis control, printing scale, etc.)
- Refreshed Borehole Log Plotter (redesigned GUI, enhanced graphical display settings, etc.)
- Greater control over time series charts and cross-tab queries
- More unit options for storing field and laboratory data
- Connect HGA projects directly to **AquiferTest Pro** for indepth analysis of aquifer properties
- Communicate between HGA and **AquaChem** for advanced aqueous geochemical analysis
- Quickly develop input data for **Visual MODFLOW** and **FEFLOW®** (model layers, maps, etc.)
- Import **Diver\*** datalogger files for indepth investigations, mapping, and reporting

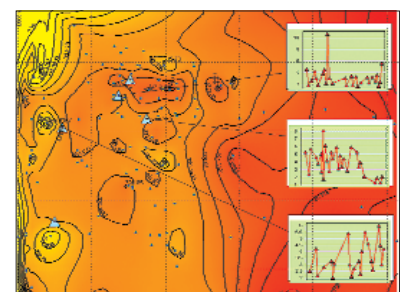
For more information or to obtain a demo, please call (519) 746-1798.



Flexible cross-section functionalities



Perform color shading and contouring



Display summary results in the Map Manager



# Your Complete Hydrogeological Toolbox

Manage | Analyze | Visualize | Report

## User Access Management

- Application Level - control permissions to features such as creating new projects, backing up and restoring databases, etc.
- Project Level - control access to individual projects and the various tasks (eg. data access, maps, queries, templates, etc.)
- Create and manage user groups (eg. create, edit, delete user groups, and add, remove, edit, users into existing user groups)
- Enforce access levels assigned to each user group

## Data Transfer System

- Import data from virtually any source including: Text files (CSV), MS Excel™ (XLS), MS Access™ (MDB), SQL™ Server
- Import data directly into pre-defined database templates for widely used environmental database schemas
- Quickly export data to various formats including text, spreadsheets, MS Access database, SQL Server
- Easy exchange of data between GIS and CAD environments

## Data Exchange

- Import Diver .MON files to display and interpret data **NEW**
- Exchange data from HGA into AquiferTest Pro to analyze water level data and characterize hydrogeological units **NEW**
- Link water quality data with AquaChem for in-depth analysis **NEW**
- Prepare and manage Visual MODFLOW input data in HGA for conceptual model development **NEW**
- Pre-process data in HGA for use in FEFLOW® geologic models **NEW**

## Queries

- Develop advanced queries for virtually any parameter
- Export crosstab queries to PDF, HTML, or MS Excel™ format
- Efficiently map query results directly to the Map Manager
- Quickly generate simple or complex data statistics

## Time Series Plotting

- Create time-series plots based on data queries
- Add best fit, trend, formula, or statistical lines to the plot
- Display uncertainty or detection limits
- Interactive, simultaneous display of multiple plot windows
- Display one or more water quality standard values as a line or symbol, for quick detection of samples that exceed the standards

## Quality Control

- Analyze duplicate, spiked and blank samples:
  - Compare relative percent difference and coefficient of variation
  - Analyze percent recovery for spiked samples
  - Compare blank samples to method detection limits
- Execute a quality analysis on a selected dataset
- Save assessment results to a MS Excel™ spreadsheet
- Define one or more lab quality assessment templates
- Monitor unit inconsistencies and filter anomalies

## Chemistry Data

- Create sample schedules including sample locations, media, dates and parameters to be measured
- Import analytical lab results from many file formats
- Seamless data validation and error checking during data import
- Display concentration data on time-series plots
- Conduct statistical analysis on your chemistry data using standard functions (AVG, MIN/MAX, STDEV, SUM, VAR, etc.)
- Display summary results with exceedences highlighted on the GIS map

## GIS Map Manager

- Create and export colour shaded maps to display data **NEW**
- Display timeseries plots linked to stations on maps **NEW**
- Choose intersecting layers to create new layers **NEW**
- Group layers in the legend to help simplify map data management **NEW**
- Create contours using selected stations and/or restrict the lines to a digitized shape **NEW**
- Improved legend for displaying layer details with graduated or value rendering **NEW**
- Add grid lines to maps to pinpoint exact locations of interest **NEW**
- Import maps with accuracy using two to three georeference points **NEW**
- Import and display raster data (DEMs, Surfer and ESRI® grid files) **NEW**
- Import an array of basemap formats
- Quickly contour data from pre-defined queries or station data
- Interpolate any data layer(s) and generate grided data files to visualize in 3D-Explorer
- Display summary results on map in a tabular format, and modify display properties of table (color, style, fields)

## Cross-Section Editor

- Import cross-section lines from shapefiles **NEW**
- Modify cross-section buffers, axis or vertical exaggeration **NEW**
- Pan and zoom while defining cross-section lines and snap lines to stations with a click of the mouse **NEW**
- Reorder cross-section legends for highlighting important cross-section features **NEW**
- Set desired printing scale of cross-section **NEW**
- Use DEM data to display true topography between wells **NEW**
- Create geological, hydrogeological, and model interpretations
- Interpret model layers for use in groundwater models
- Query and map interpretation results (eg. overburden thickness)
- Display borehole log plots directly on cross-sections (e.g. display geophysical plots on the cross-section to assist in the interpretation)
- Select standard or custom cross-section fill patterns

## Borehole Log Plotter

- Display well nests, reducers and telescoping casings **NEW**
- Display selected water levels (max, min, avg, first, last, etc.) with customized symbols **NEW**
- Display annular fills in boreholes and between piezometers **NEW**
- Customize display settings (casing color, image patterns etc.) **NEW**
- Display multiple data series on a single borehole log plot column to better display depth profiles for multiple contaminants, downhole geophysical logging data, or other depth dependent data
- Borehole logs are mapped directly from the data source
- Choose from a selection of pre-designed borehole log templates

## HGA 3D-Explorer

- Render colorful, high-impact, 3D cross-section views
- Display 3D plumes directly from source data
- Generate static or transient plumes for one or more contaminant(s)
- Create .AVI animation files for use in presentations
- Calculate volumetric results based on the isosurface values
- Display concentration color maps along a cross-section line or horizontal YZ, XZ plane, and specify cut-off limits
- Display concentration contour lines with multiple property options

## Report Editor

- Create and save unlimited number of dynamic report layouts
- Incorporate data values, tables, logs, cross-sections, 3D views, maps, etc.
- Export reports to various file formats (eg. PDF, HTML, RTF, etc.)
- Dynamic linking of reports to HGA data and components automates the report creation process
- Supports MS Visual Basic™ Script and JavaScript events/expressions

